

The Road to Pebble Beach Starts Here.
WEDNESDAY, SEPTEMBER 23, 2020
Cantigny Golf Club in Wheaton, Illinois



TITLE SPONSOR



NATIONAL CORPORATE PARTNER



NATIONAL PROMOTIONAL PARTNERS



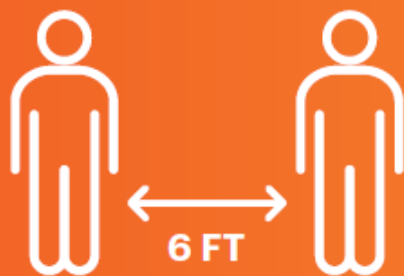
NATIONAL FINALS HOST



PEBBLE BEACH
RESORTS



To Ensure the Safety of Everyone, please



**Maintain Physical
Distance**



Wear a Mask
Don't have one?
We have one for you!



**Wash your Hands +
Use Hand Sanitizer**



*Since 1976, our doctors
have been leaders in
kidney care.*

*Today, we proudly support the
NKFI and the work they do for
those living kidney disease and
transplant.*

**Serving patients in their neighbor-
hood, with locations throughout
Northern Illinois and north & cen-
tral Indiana**

www.nephdocs.com 630-973-5000





KONICA MINOLTA

HERE'S TO THE FINISHERS

People who never give up.
People who always get the job done, regardless
of the challenges they face. People like you.

At work, as in golf, the right technology impacts
your success. At Konica Minolta, we build
technology that helps people do their jobs better.
Our award-winning multifunction printers
allow you to manage print workflow, reduce costs
and increase productivity.

Learn more at reshapework.com

Konica Minolta is
proud to support the



National Kidney Foundation*





Kidney Cars



HAVE YOUR VEHICLE BE FOR MORE

We're proud to be a sponsor of the National Kidney Foundation Konica Minolta Golf Classic. Every vehicle donated through One Car One Difference to the National Kidney Foundation supports their mission to bring awareness to, prevent and treat kidney disease.

[CLICK HERE FOR MORE](#)



WELCOME



Hello Friends and Competitors,

Welcome to The Premier Amateur Golf Event for Charity, the National Kidney Foundation Konica Minolta Golf Classic, and congratulations on reaching the winners' circle.

With 30 events raising \$3.5 million annually, the NKF Konica Minolta Golf Classic is a major source of support for NKF programs and services for kidney patients in our area.

You are playing today for a chance to tee off at the legendary Pebble Beach Resorts—an ultimate experience for golfers. Top finishers today are invited to compete in the NKF Konica Minolta Golf Classic National Finals at the Pebble Beach Resorts on January 14-17, 2021. At the National Finals, teams play a 54-hole tournament at the Pebble Beach Golf Links®, Spyglass Hill Golf Course®, and the Links at Spanish Bay™. This is the only event of its kind where you can play locally and move on to compete for a prestigious national title at the Pebble Beach Resorts.

Not only will you compete in a prestigious tournament, amongst your peers, friends, current clients, and prospective future clients, but thanks to your support, several exciting developments have been happening for kidney patients and NKF. Kidney advocates backing the Advancing American Kidney Health initiative and NKF's launch of the "Are You The 33%?" public awareness campaign, among other "wins," are described by Kevin in his letter on the next page. Wonderful people like you working with NKF are making us a winning team against kidney disease and for kidney health.

Since the NKF Konica Minolta Golf Classic began in 1987, over 300,000 golfers have played across the country and raised \$110 million for kidney patients. I am honored to be among friends and colleagues who are committed to helping such a worthy cause. Thank you again for your support!

Good luck today,

SCOTT DOWNING

Chair, NKF Konica Minolta Golf Classic

MESSAGE FROM OUR CEO



Welcome Friends & Competitors,

Thank you for competing in this National Kidney Foundation Konica Minolta Golf Classic event. Your progress throughout the year toward the National Finals at Pebble Beach, through each course, each game, each local tournament, and through the final competition, mirrors the type of progress NKF makes each year. Each breakthrough and achievement is one step closer to our goal—eliminating all preventable CKD, making transplants available to all patients, and better quality of life and outcomes for all kidney patients.

Your ongoing support is resulting in “wins” for kidney patients and NKF. First, years of kidney advocacy by patients, NKF and other organizations paid off when the president signed an executive order enacting The Advancing American Kidney Health initiative, a bold vision for transforming kidney care, that will help increase organ donation, earlier detection and care of CKD, and incentives to develop new, cutting-edge treatments, including advancing home dialysis..

We are also launching the NKF Patient Network, an interactive registry of patients with kidney disease and an online platform where patients will be able to get personalized information to help them navigate their disease; find clinical trials; or connect with specialists or facilities.

Additionally, NKF is expanding its THE BIG ASK: THE BIG GIVE platform, aimed to educate kidney patients and their families/caregivers on how to find a living donor, to 15 more key U.S. markets.

“Are You The 33%?” is NKF’s newest campaign. “Are You The 33%?” shines a light on the at-risk audience—adults with any of the following five risk factors: high blood pressure, heart disease, diabetes, obesity, and a family history of kidney disease.

And recently, with NKF’s support, new immunosuppressive drug coverage legislation was introduced in the U.S. House of Representatives through a bipartisan effort. The legislation will extend immunosuppressive coverage past the 36-month cut-off currently in place to cover the medications for the life of the transplant.

Thanks to your support, today—and throughout the year—everyone wins.

Sincerely,

JACQUELINE BURGESS-BISHOP

CEO

National Kidney Foundation of Illinois



SCHEDULE

11:30am

Registration Opens

Grab and Go Lunch Available

Putting Green/Driving Range Opens

12:50pm

Call to Carts/Announcements

1:00pm

Shotgun Start

Followed by

Tailgate-Style Dinner

Awards Ceremony



LEADERSHIP



Chair

Scott Downing

Benesch, Friedlander, Coplan & Aronoff LLP

Committee Members

Jake Cilek

McGuireWoods LLP

Veeda Landeras, MD

Associates in Nephrology

Deepak Mital, MD

Advocate Christ Medical Center

Ryan Moore

Benesch, Friedlander, Coplan & Aronoff LLP

Bryan Murphy

Nephrology Associates of Northern Indiana & Illinois

Ken Murphy

Nephrology Associates of Northern Indiana & Illinois

Erik Muse

NxStage

Ning Ramos

Mike Schrader

NxStage

Kelly Wootton

Fresenius

Kerri Zelensek

McGuireWoods LLP

LEADERSHIP

BOARD OF DIRECTORS

President

Tipu Puri, MD, PhD

UChicago Medicine

Vice President

Jill M. Schaaf

Retired Healthcare Executive

Secretary

Jim Easterbrook

Fresenius

Treasurer

Brian D'Dea

Nephrology Associates of Northern Indiana & Illinois

Professional Advisory Board Chair

Shubhada Ahya, MD

Northwestern Memorial Hospital

Board Members

Andrew J. Aronson, MD, MBA, MPH

Retired Pediatric Nephrologist

Divya Jain Arwindekar, DO

Loyola University Medical Center

Gavin Campbell

Baxter International, Inc.

Brett Curtiss, RD

ICRN Chair

Matt Gilbert

Green Door Capital

Ashutosh Gupta, MD

Retired Clinical Nephrologist

Amanda Hale, DNP, MSN, MBA, RN

DaVita

Wendy Kadon

Kellogg Board Fellow

Tara Goff Kamradt

Benesch, Friedlander, Coplan & Aronoff LLP

Gregory Kent

Ferrara Candy

Holly Mattix-Kramer, MD, MPH

Loyola University Medical Center

Kristen Martin Uebel, MBA, MM, HEA, BSN, RN, CNN

ICNNT Chair

Amit Mehta

Paul Hastings

Sauna Phillips, LCSW

ICNSW Chair

Mike Schrader

NxStage

Mark Schwartz

Morgan Stanley Wealth Management

Andres Serrano, MD

Mount Sinai Hospital

Dinee Simpson, MD

Northwestern Memorial Hospital

Kareem Simpson, MD

Associates in Nephrology

Susan V. Sullivan

Mercer

Paul Temcio

Bridge House Advisors

Jeffrey Wissink

Navint Partners LLC



SPONSORS



TITLE SPONSOR



NATIONAL CORPORATE PARTNER



NATIONAL PROMOTIONAL PARTNERS



NATIONAL FINALS HOST



SPONSORED LOCALLY BY

PRESENTING SPONSOR



DINNER SPONSOR



LUNCH SPONSOR



CART SPONSOR



MISSION SPONSOR
U.S. Renal Care

PUTTING GREEN SPONSOR
McGuire Woods

EXHIBITOR
NxStage

FLAG SPONSOR



BEVERAGE CART SPONSOR



HOLE SPONSOR
City Capital Advisors

OFFICIAL RULES



SCRAMBLE FORMAT

1. All players hit tee shots. Each player's tee shot must be used at least three times per round.
2. Choose the best drive and have all players hit their next shot from the spot within one club length, no closer to the hole, and played from the same cut of grass. The name of the player whose drive is used must be confirmed with the scorer. Should a team's selected shot lie in a hazard, bunker, fairway rough, or green-side fringe, then all team members must play their shots from the same conditions.
3. Once on the green: each player's ball must be placed within six inches of the ball mark, no closer to the hole.
4. Continue this sequence until the ball is holed out.
5. Once a ball is holed out, play is completed for that hole. Record the score and confirm it with the scorer.

OFFICIAL RULES



RULES OF PLAY

1. All players to play at scratch. No handicap strokes will be counted.
2. The tournament is a 18-hole, 4-person scramble event. The team with the lowest score in each division wins.
3. All counting putts must be holed out.
4. Play all balls "up" throughout the course. You may rake bunkers between shots.
5. USGA Rules, except as modified by local rules, will apply including 14-club rule. Players may not share clubs.
6. At the completion of the round, your scorecard must be signed by one team member, attested to by the scorer, and then turned in to the scoring table immediately.
7. In the event of ties, the Golf Professional shall break the ties by matching scorecards beginning with the #1 handicap hole, etc., until the tie is broken.
8. Decisions of the Golf Professional Staff and National Kidney Foundation Tournament Management are final and not subject to appeal.
9. GPS and Hand-Held Range Finders are permitted. However, the device must conform with the USGA Rules of Golf and measure distance only.
10. Please replace all divots/rake bunkers/ repair ball marks.

TEAM PRIZES



Top finishing teams will receive an invitation to the January 14-17, 2021 NKF Konica Minolta Golf Classic National Finals at the Pebble Beach Resorts®*

** Additional registration, travel and accommodation fees required.*

CONTESTS

Closest to the Hole - Woodside 8

- Prize: Greg Norman Collection Pullover Apparel

Longest Drive - Lakeside 5

- Prize: NKF National Partners Prize Package

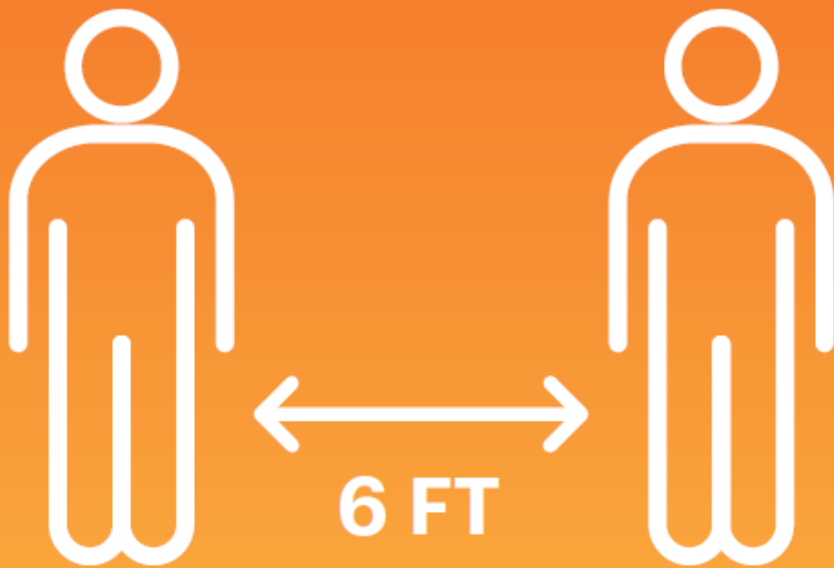
Beat the Pro - Lakeside 8

- Prize: Escorted threesome at Ruth Lake Country Club



NATIONAL KIDNEY
FOUNDATION®

Thank You for Practicing Social Distancing





RESULTS, NOT PROMISES.

At Advocate Christ Medical Center, we are shaping the future of kidney transplantation. Transforming care to include more comprehensive treatment plans, innovative therapies, advanced surgical techniques. Achieving excellent outcomes. Combining heart and kidney transplants.

To learn more, call 708.684.7100 or visit advocatehealth.com/cmc-kidney-transplant-program.

Medicare and UNOS certified.

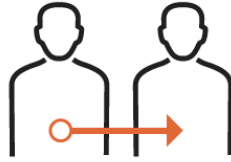
 Advocate Christ Medical Center

KIDNEY WAITING LIST FACTS



Because of your investment, people with kidney disease are living longer.

40%



decline in mortality rates for people with a kidney transplant since 1996.

28%



decline in mortality rates for people on dialysis since 1996.

Learn more at [kidney.org](https://www.kidney.org)

National Kidney Foundation of Illinois
Presents 35th Annual

Gift of Life Gala

*"Coming Together As A Team"
along with Chicago White Sox Charities*

**Thursday, October 29, 2020
Virtual**

Gift of Life Award Recipients

Ed Farmer (posthumously)
Illinois State Senator Mattie Hunter

Corporate Partner Award Recipient

Baxter International, Inc.

Emcee

Pat Tomasulo, WGN-TV

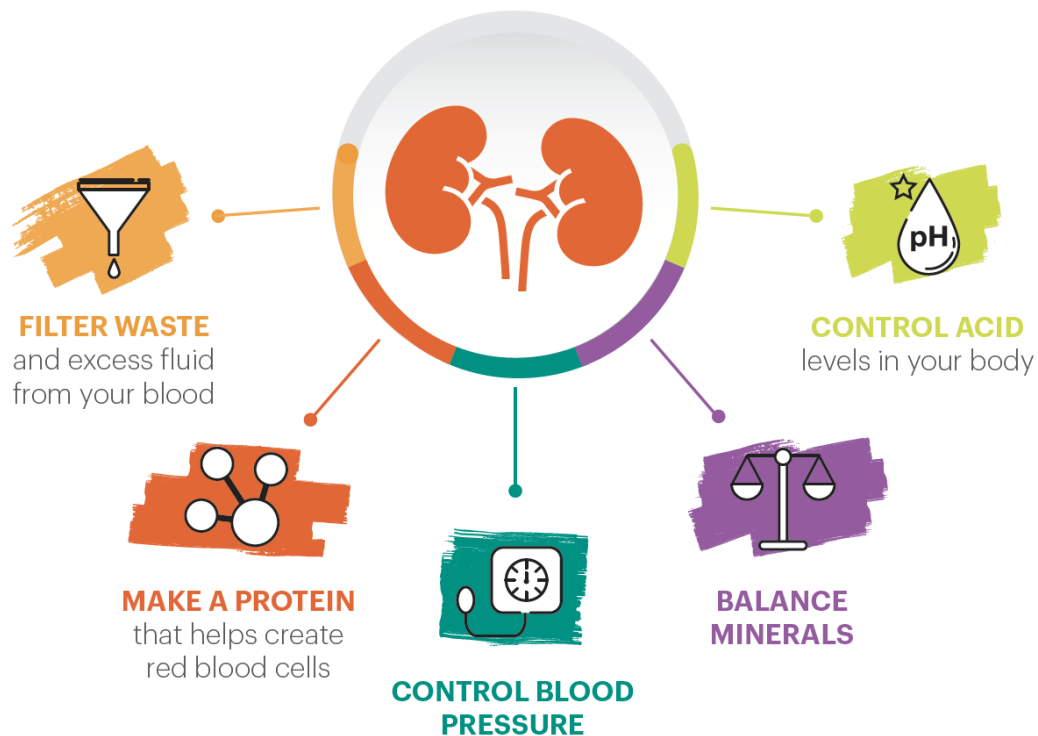
www.nkfi.org/gala for tickets

ASSOCIATES IN NEPHROLOGY



Associates in Nephrology, S. C. is proud of the National Kidney Foundation of Illinois and their continuous efforts. We wish you great success on the 2020 Konica Minolta Golf Classic.

WHAT KIDNEYS DO



KIDNEY FACTS

- 1 in 3 American adults is currently at risk for developing kidney disease.
- 37 million American adults have kidney disease – and most don't know it.
- 700,000+ Americans have kidney failure and require dialysis or a kidney transplant to survive.
- 100,000 Americans are on the waiting list for a kidney transplant.
- 21,000 Americans receive a kidney transplant each year.
- Early detection and treatment can slow or prevent the progression of kidney disease.



KONICA MINOLTA

HERE'S TO THE FINISHERS

People who never give up.
People who always get the job done, regardless
of the challenges they face. People like you.

At work, as in golf, the right technology impacts
your success. At Konica Minolta, we build
technology that helps people do their jobs better.
Our award-winning multifunction printers
allow you to manage print workflow, reduce costs
and increase productivity.

Learn more at reshapework.com

Konica Minolta is
proud to support the



National Kidney Foundation*



From the physicians of NANI,

Willow Springs Surgery Center



Dialysis access procedures,
vascular surgery,
podiatry
and more
performed in a
multi-specialty ASC

A convenient outpatient
environment with
appointment flexibility and
state of the art facilities.
Located in south suburbs
of Chicago, near I-294.

Call to refer a patient today

www.willowspringssurgery.com

708-594-3513

Awarded Accreditation by
 **AAAHC**
ACCREDITATION ASSOCIATION
for AMBULATORY HEALTH CARE, INC.

DO YOU
MATCH?



Many companies match charitable donations made by employees, employees' spouses, and retirees.

Find out if your employer has a matching gift program and double or triple the impact of your gift.

kidney.org/matchinggifts

DOUBLE OR TRIPLE THE IMPACT OF YOUR DONATION
WITH A **MATCHING GIFT** FROM YOUR EMPLOYER.

TEE IT UP TO FIGHT KIDNEY DISEASE.

Shop the Imperial x National Kidney Foundation
Headwear Collection on ImperialSports.com

Imperial
SINCE 1916

×



NATIONAL KIDNEY
FOUNDATION.





National
Kidney
Foundation®

Kidney Cars®

HELP YOUR CAR BE FOR MORE

When you donate your car to the National Kidney Foundation through One Car One Difference, you contribute to lifesaving health services for millions of Americans.

[CLICK HERE FOR MORE](#)





KONICA MINOLTA
GOLF CLASSIC

JANUARY 14-17, 2021
National Finals at Pebble Beach

Top Finishing teams from each local event are invited to compete at Pebble Beach Golf Links, Spyglass Hill Golf Course, and The Links at Spanish Bay. *(Additional fees required)*



TITLE SPONSOR

NATIONAL CORPORATE PARTNER

NATIONAL PROMOTIONAL PARTNERS

NATIONAL FINALS HOST



KONICA MINOLTA



Official Golf Apparel



PEBBLE BEACH
RESORTS