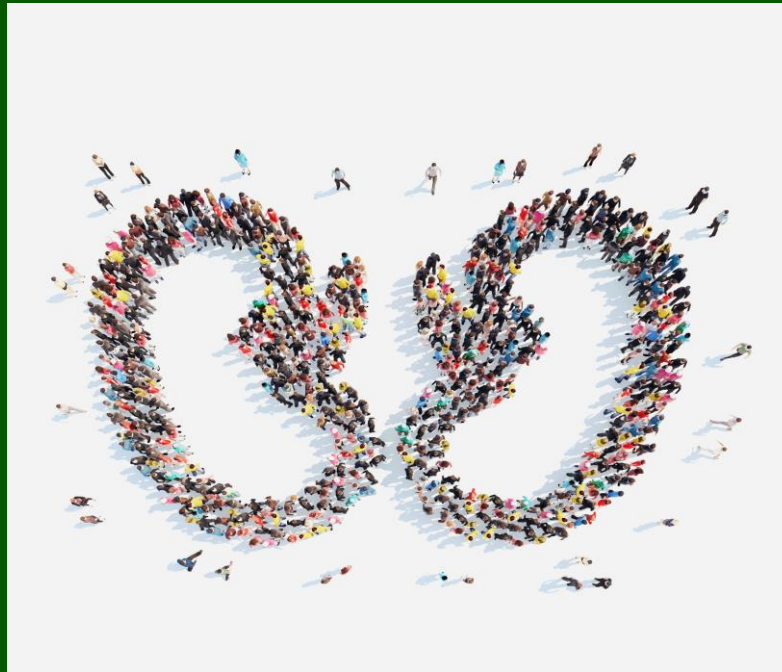


Putting the Nephrology Nutrition SOP SOPP into Practice

Lois Hill, MS, RD, LD, LDE, FAND



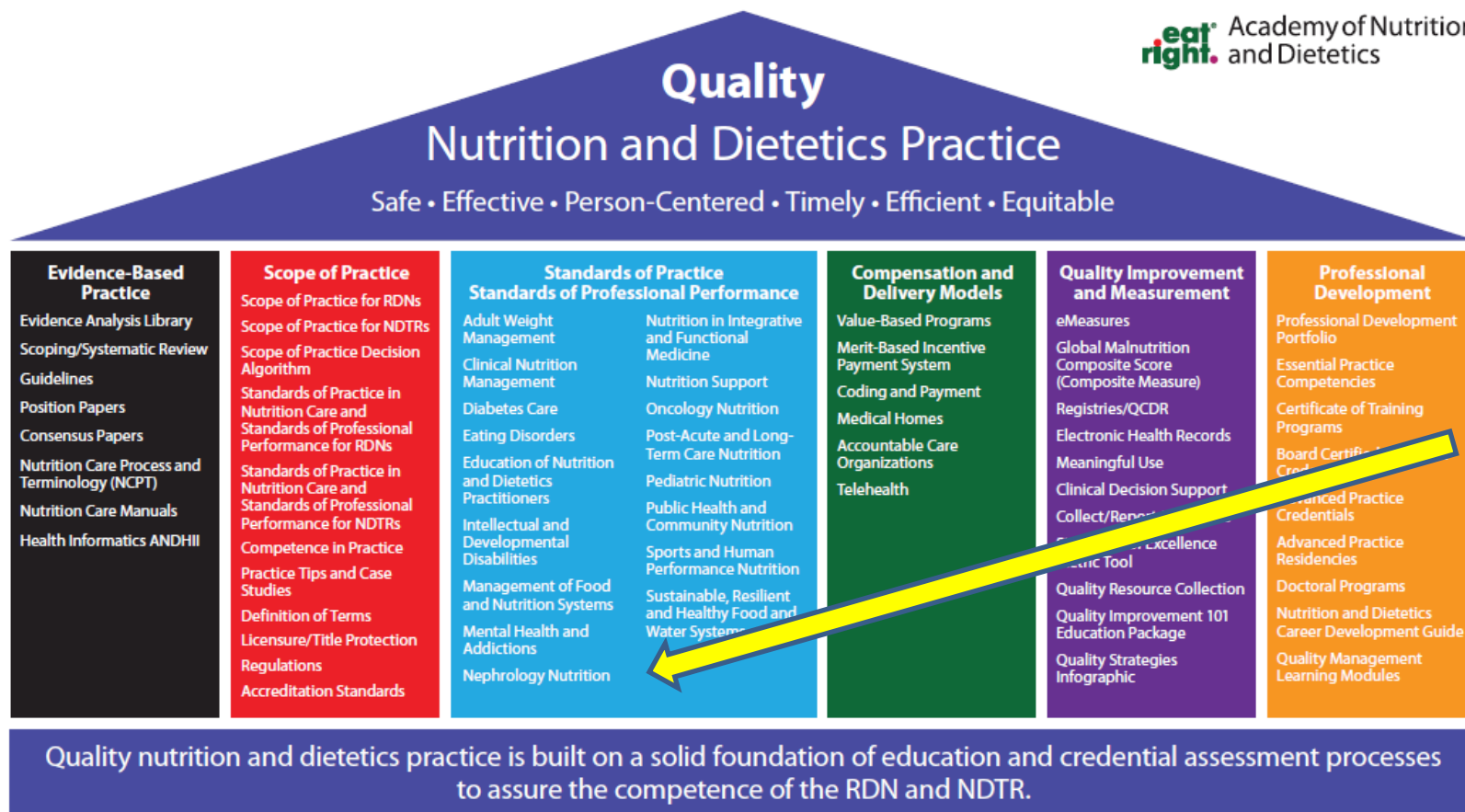
Learning Objectives

Following this presentation, RDNs will be able to:

- Describe the Revised 2020 SOP and SOPP for RDNs (Competent, Proficient, Expert) in Nephrology Nutrition
- Utilize the SOP and SOPP for self-evaluation
- Recognize the levels of practice and apply the SOP SOPP to practice advancement

SOP – Standards of Practice; SOPP – Standards of Professional Performance

Academy Quality Brochure



Find the brochure at:
<https://www.eatrightpro.org/practice/quality-management/competence-case-studies-practice-tips>

Standards of Practice (SOP) and Standards of Professional Performance (SOPP)



Foundational Documents

- Academy/CDR Code of Ethics
- Scope of Practice for the RDN
- Scope of Practice for the NDTR
- Standards of Practice (SOP) in Nutrition Care and Standards of Professional Performance (SOPP) for RDNs
- SOP in Nutrition Care and SOPP for NDTRs
- Focus Area SOP and/or SOPP for RDNs



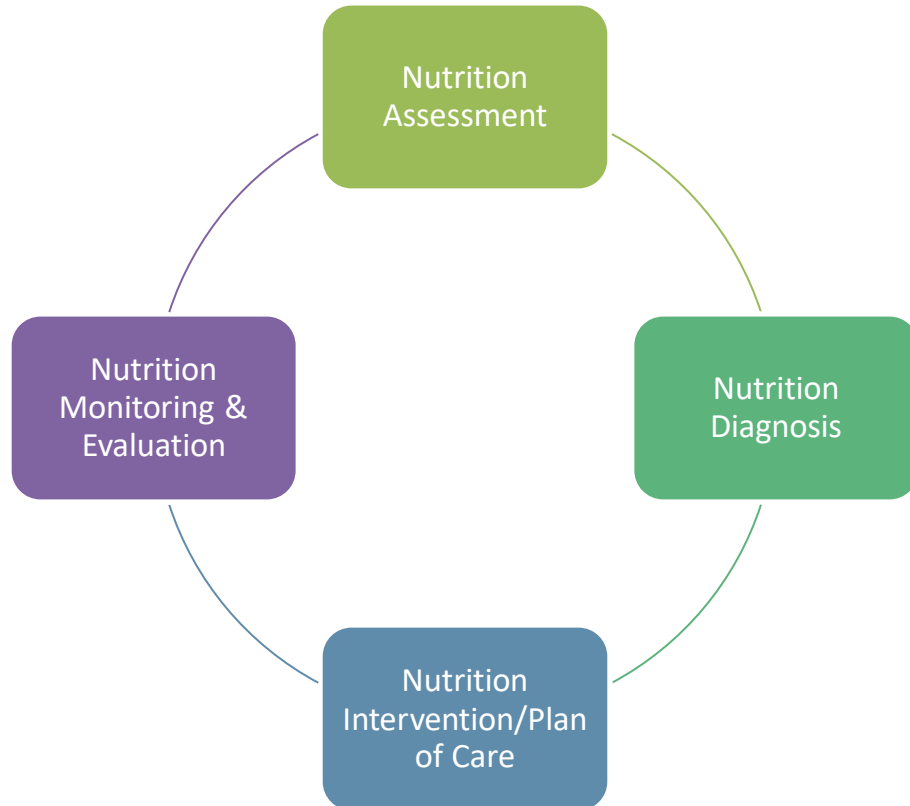
What are the SOP and SOPP?

- Consensus standards
- Used for professional development
 - Guide self-evaluation
 - Identify education and skills to advance practice level
- Used to determine competence for credentialed nutrition and dietetics practitioners

www.eatrightpro.org/sop

What do they represent?

Standards of Practice



Standards of Professional Performance



Standards Promote

Safety & Quality

Consistency

Improved Outcomes

Ethical & Transparent practices

Professional Advancement

Standards Provide

Measurable indicators

Guidance for jobs, assessment, and objectives

Description of the role of nutrition & dietetics

Focus Area SOP and SOPP in Nephrology Nutrition



Why are the SOP SOPP revised?

7-year review process considering changes in:

Community Nutrition & Public Health



Health Care



Business & Industry

Technological Advances



Education & /Research



Consumer Interest



Emerging Practice



Nephrology Nutrition SOP SOPP History

FROM THE ACADEMY

Standards of Practice & Professional Performance



Academy of Nutrition and Dietetics and National Kidney Foundation: Revised 2014 Standards of Practice and Standards of Professional Performance for Registered Dietitian Nutritionists (Competent, Proficient, and Expert) in Nephrology Nutrition

Pamela S. Kent, MS, RD, CSR, LD; Maureen P. McCarthy, MPH, RD, CSR, LD; Jemlynn D. Burrowes, PhD, RD, CDN; Linda McCann, RD, CSR; Jessie Pavlinac, MS, RD, CSR, LD; Catherine M. Goeddeke-Mericlel, MS, RDN, LD; Karen Wiesen, MS, RD, LD; Sarah Kruger, MS, RD, CSR; Laura Byham-Gray, PhD, RD; Rory C. Pace, MPH, RD, CSR; Valerie Hannahs, MS, RD, LD; Debbie Benner, MA, RD, CSR

ABSTRACT

Compelling evidence indicates that the incidence of chronic kidney disease (CKD) is increasing because of an aging population and a higher prevalence of cardiovascular disease, diabetes, and hypertension. Nutrition management of patients with CKD requires early disease recognition, appropriate interpretation of the markers and stages of CKD, and collaboration with other health care practitioners. Better management of CKD can slow its progression, prevent metabolic complications, and reduce cardiovascular related outcomes. Caring for patients with CKD necessitates specialized knowledge and skills to meet the challenges associated with this growing epidemic. The Academy of Nutrition and Dietetics Renal Dietitians Practice Group and the National Kidney Foundation Council on Renal Nutrition, with guidance from the Academy of Nutrition and Dietetics Quality Management Committee, have updated the 2009 Standards of Practice in Nutrition Care and Standards of Professional Performance as a tool for registered dietitian nutritionists working in nephrology nutrition to assess their current skill levels and to identify areas for additional professional development in this practice area. The Standards of Practice apply to the care of patients/clients with kidney disease. The Standards of Professional Performance consist of six domains of professionalism, including: Quality in Practice, Competence and Accountability, Provision of Services, Application of Research, Communication and Application of Knowledge, and Utilization and Management of Resources. Within each standard, specific indicators provide measurable action statements that illustrate how nephrology nutrition principles can be applied to practice. The indicators describe three skill levels (ie, competent, proficient, and expert) for registered dietitian nutritionists working in nephrology nutrition.

J Acad Nutr Diet. 2014;114:1448-1457.

Editor's note: Figures 1, 2, and 3 that accompany this article are available online at www.andjnl.org.

THE ACADEMY OF NUTRITION and Dietetics (Academy) Renal Dietitians Practice Group and the National Kidney Foundation

This article is being published concurrently in the Journal of Renal Nutrition (2014;24(5):279-283 e451). The articles are identical except for minor stylistic and spelling differences in keeping with each journal's style. Either citation can be used when citing this article.

© 2014 by the Academy of Nutrition and Dietetics and the National Kidney Foundation, Inc.
2212-2672
<http://dx.doi.org/10.1016/j.jand.2014.05.006>

Council on Renal Nutrition (NKF-CRN), under the guidance of the Academy Quality Management Committee, have revised the Standards of Practice (SOP) and Standards of Professional Performance (SOPP) for Registered Dietitians

in Nephrology Care, originally published in September 2009.^{1,2} The revised document, Academy of Nutrition and Dietetics and National Kidney Foundation: Revised 2014 Standards of

All registered dietitians are nutritionists—but not all nutritionists are registered dietitians. The Academy's Board of Directors and Commission on Dietetic Registration have determined that those who hold the credential Registered Dietitian (RD) may optionally use "Registered Dietitian Nutritionist" (RDN) instead. The two credentials have identical meanings. In this document, the expert working group has chosen to use the term RDN to refer to both the registered dietitian and the registered dietitian nutritionist.

Approved April 2014 by the Quality Management Committee of the Academy of Nutrition and Dietetics (Academy); the Executive Committee of the Renal Dietitians Dietetic Practice Group of the Academy and the National Kidney Foundation Council on Renal Nutrition. Scheduled review date: October 2018. Questions regarding the Standards of Practice and Standards of Professional Performance for Registered Dietitian Nutritionists in Nephrology Nutrition may be addressed to Academy quality management staff: Sharon McCauley, MS, MBA, RDN, LDN, FADA, FAND, director, Quality Management, at quality@eatright.org.

1448 JOURNAL OF THE ACADEMY OF NUTRITION AND DIETETICS

Previously Published Article

- Originally Published as SOP and SOPP in Nephrology Nutrition in 2014
- Revised and published in March 2021

— <https://jandonline.org>

Overview of Nephrology Nutrition

- Nephrology nutrition encompasses therapeutic and preventive care for individuals of all ages with a variety of kidney disorders and recipients of kidney transplants.
- The updated Kidney Disease Outcomes Quality Initiative (KDOQI) Nutrition Practice Guidelines (ages 19 and older) were published in 2020 through a collaboration between the Academy's Evidence Analysis Library and the National Kidney Foundation.
- While studies of have shown medical nutrition therapy (MNT) can slow progression of chronic kidney disease (CKD), it remains underutilized. CKD is one of two conditions for which MNT is a covered Medicare benefit (approximately stages 3b-5 (GFR 13 – 50 ml/min/1.73m²) or within 3 years post-transplant).

RDNs in Nephrology Nutrition

- RDNs work in hospitals or other settings, which may range from in-center dialysis facilities, homes dialysis programs, transplant centers, prisons, and corporate dialysis organizations.
- RDNs provide MNT to people with CKD in CKD clinics, physician offices, private practice, and via telehealth.
- RDNs must have a minimum of one year of clinical experience to work in an adult dialysis setting per the CMS Conditions for Coverage.
- RDNs, as mandated members of the interdisciplinary team in dialysis programs and transplant teams, develop a nutrition plan using a person-centered approach that prioritizes the individual's preferences and needs.

What's in the Future for Renal Dietitians?

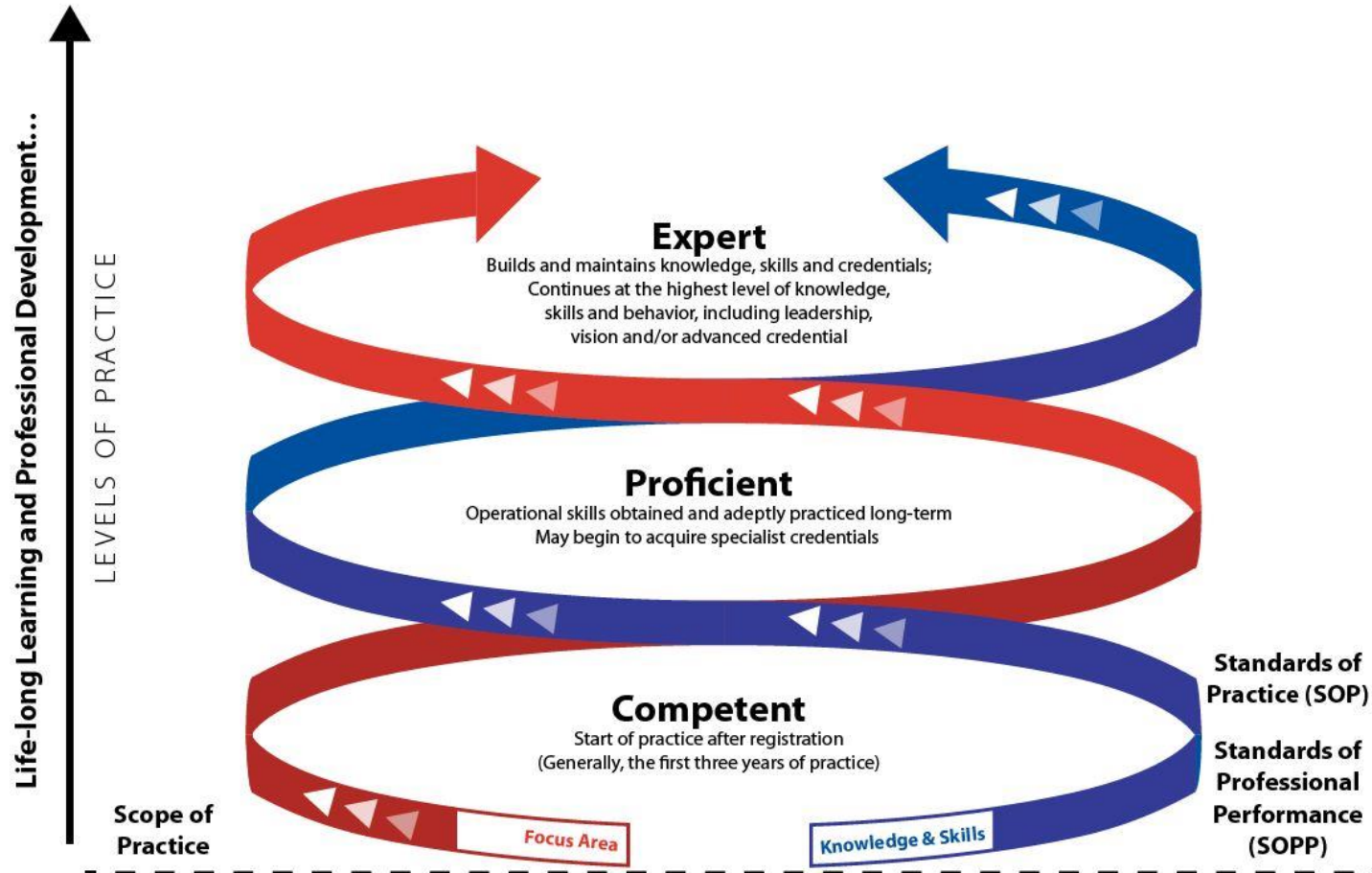
- The **Advancing American Kidney Health Initiative** (AAKHI) launched in 2019 by the Department of Health and Human Services is intended to drive changes, improvements and innovations in the identification and treatment of kidney disease with improved outcomes.
 - Increased focus on delaying need for dialysis, preemptive kidney transplants, use of home dialysis therapies, strategies to increase organ donations for transplant, and a larger focus on value-based care for people with CKD.
- **Kidney Innovation Accelerator (KidneyX)** – accelerate innovations such as drugs, devices, and therapies

Be ready for new challenges and opportunities for RDNs practicing in nephrology nutrition.

Levels of Practice



Dreyfus Model



Adapted from the *Dietetics Career Development Guide*. For more information, please visit www.eatrightPRO.org/futurepractice

Example of Levels of Practice

From the Nephrology Nutrition SOP Nutrition Diagnosis Standard

2.2 Prioritizes the nutrition problems(s) based on severity, safety, patient/client needs and preferences, ethical considerations, likelihood that nutrition intervention/plan of care will influence the problem, discharge/transitions of care needs, and patient/client/advocate perception of importance.

Competent

X

Proficient

X

Expert

X

Components - Nephrology Nutrition SOP SOPP

Components are:

- Article
- Figure 1- SOP indicators: Standards 1-4
- Figure 2- SOPP indicators: Standards 1-6
- Figure 3- SOP and SOPP for RDNs in Nephrology Nutrition
(Background Figure with Helix)
- Figure 4- Resources *
- Figure 5- Stages of Chronic Kidney Disease *
- Figure 6- Role Examples

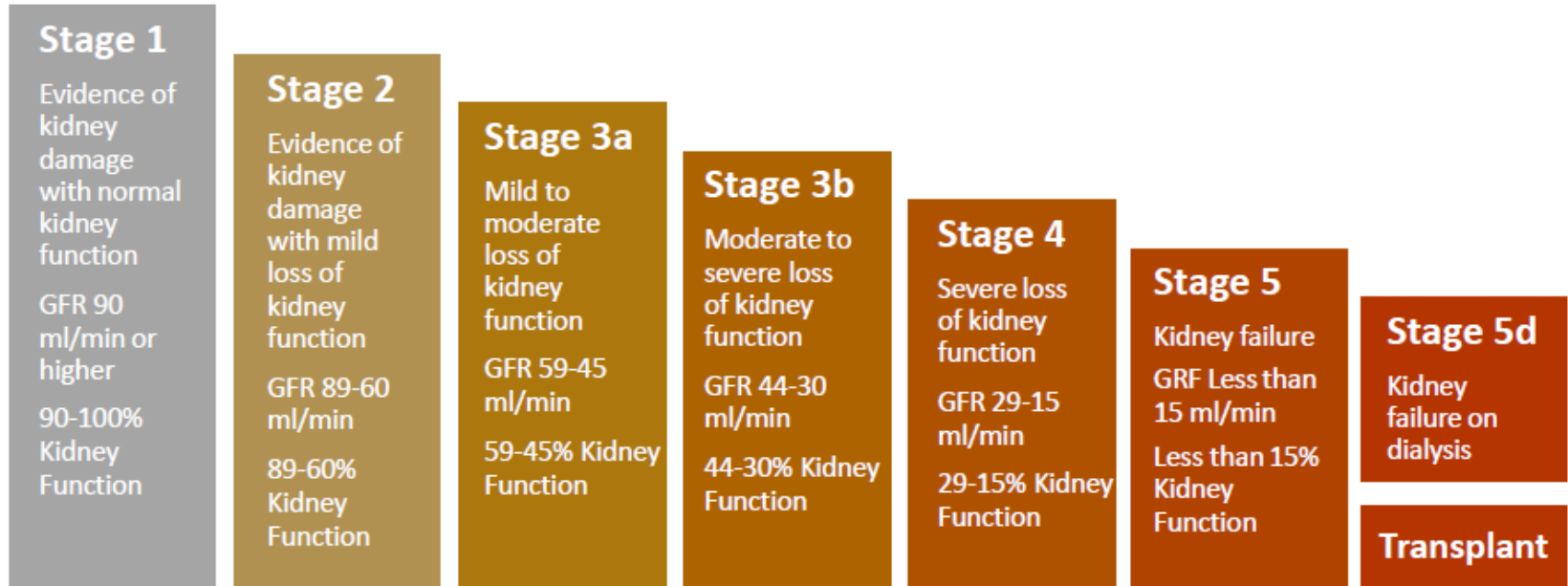
Key Updates

The Nephrology Nutrition SOP SOPP document update highlights include:

- A description of the roles for RDNs in Nephrology Nutrition and how RDNs can leverage their unique skillset
- Updated indicators to illustrate practice at different levels within this focus area
- Figure illustrating the Stages of Chronic Kidney Disease
- Examples of RDNs in roles such as clinical practitioner in inpatient care, a dialysis or kidney transplant center, outpatient/private practice, or in a post-acute long-term care setting; food service manager/director; and faculty, nutrition and dietetics education program
- A summary of key tools and resources to assist practitioners in this area

New Figure- Stages of CKD

Decreased Kidney Function →



As kidney disease worsens, the glomerular filtration rate (GFR) goes down. At Stage 5, renal replacement therapy (dialysis or or transplant) is commonly initiated. Urine albumin to creatinine ratio (ACR) is an additional marker for CKD. When the ACR is > 30 mg/gm, albuminuria is present. Higher levels of albuminuria indicate more severe kidney damage and are associated with increased risk of progression to End-Stage Kidney Disease (ESKD) and mortality.

How to Apply to Practice



Using the SOP and SOPP in Self-Evaluation

Identify quality indicators to measure improvement in care and service

Professional self-reflection

Self-evaluate level of practice using SOP
SOPP in Nephrology
Nutrition

Evaluate learning plan

Learning needs assessment



Implement learning plan

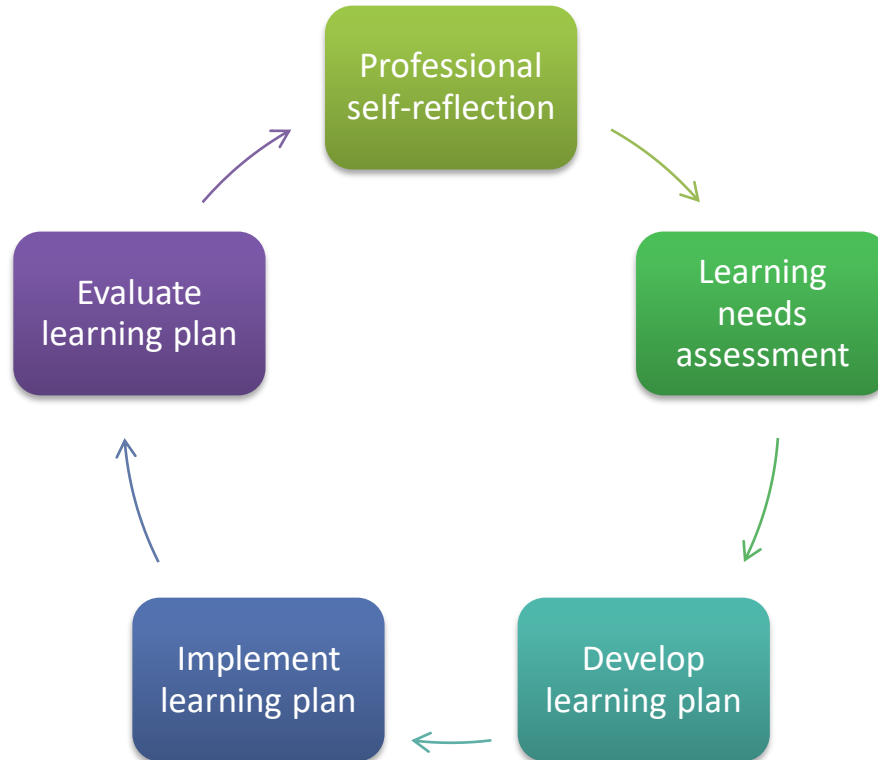


Identify resources to increase knowledge and tailor nutrition care and services

Develop learning plan



Case Study



Professional self-reflection

- ✓ RDN uses SOP SOPP in Nephrology Nutrition to self-evaluate level of practice for CDR Learning Plan via Learning needs assessment
- ✓ Learning Plan Development

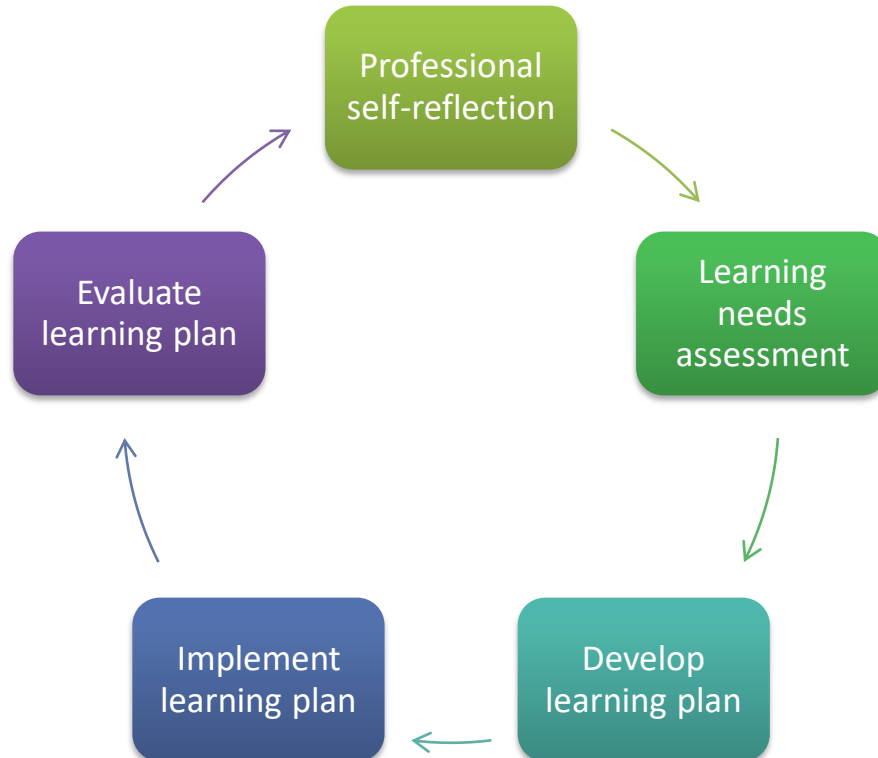
Case Study

Examples of indicators related to case study

RDN:

- ✓ 1.7.1 Recognizes & respects cultural & racial diverse backgrounds to effectively interact & build meaningful relationships with others.
- ✓ 8.2.1 Engages in educational activities to maintain knowledge & to obtain new knowledge of diseases & clinical conditions.
- ✓ 10.2.1 Selects valid & reliable tools to conduct comprehensive nutrition assessments.

Case Study

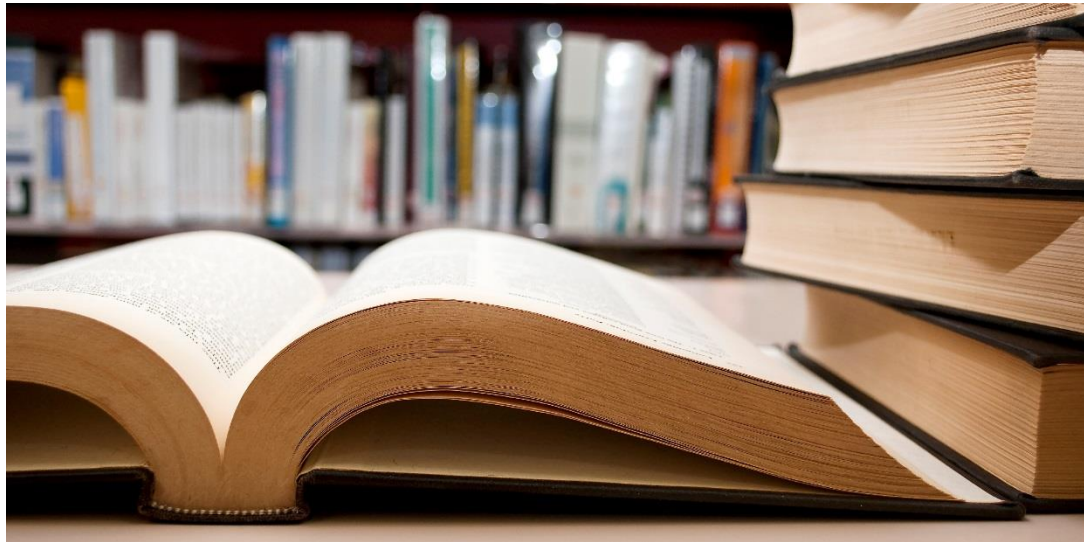


Identify quality indicators and design actions to measure improvement in care and advance the RDN's practice level.

Examples:

- ✓ Passed CSR Exam
- ✓ Successful completion of CKD Certificate of Training

Where can you find Standards resources?



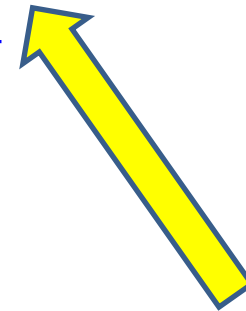
Locations

Academy Webpages:

- Standards of Practice
 - www.eatrightpro.org/sop

Journal Collection Webpages:

- Scope and Standards for RDNs and NDTRs
 - <http://jandonline.org/content/core>
- Focus Area Standards for CDR Specialist Credentials
 - <http://jandonline.org/content/credentialed>
- Focus Area Standards for RDNs
 - <http://jandonline.org/content/focus>



Nephrology Nutrition SOP
and SOPP here and in
March 2021 JAND and
JRN issues

Nephrology Nutrition SOP SOPP

Authors:

- Rory Pace, MPH, RD, CSR, FAND
- Judy Kirk, MS, RD, CSR, CDN, FNKF

Lead Reviewers:

- Kristen Nonahal, RDN, FNKF
- Lois Hill, MS, RDN, LD, LDE, FAND



Subject Matter Reviewers:

- ✓ Sara Erickson, RD, CSR, LDN
- ✓ Kyle Lamprecht, MS, RD, CSP, CSR, CD-N
- ✓ Golnaz Friedman, RD, CCTD
- ✓ Donna Gjesvold, RD, LD
- ✓ Clare Liu, MS, RD, CSR
- ✓ Leslie McPhatter, MS, RD, CSR
- ✓ Carolyn Cochran, MS, RDN, LD, CDE, FNKF
- ✓ Pamela Kent, MS, RD, CDE, LD

Questions?
Will be addressed at 1:30 to 2 PM
Thank you!